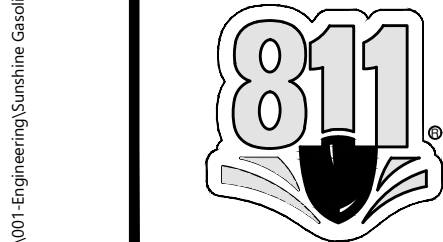
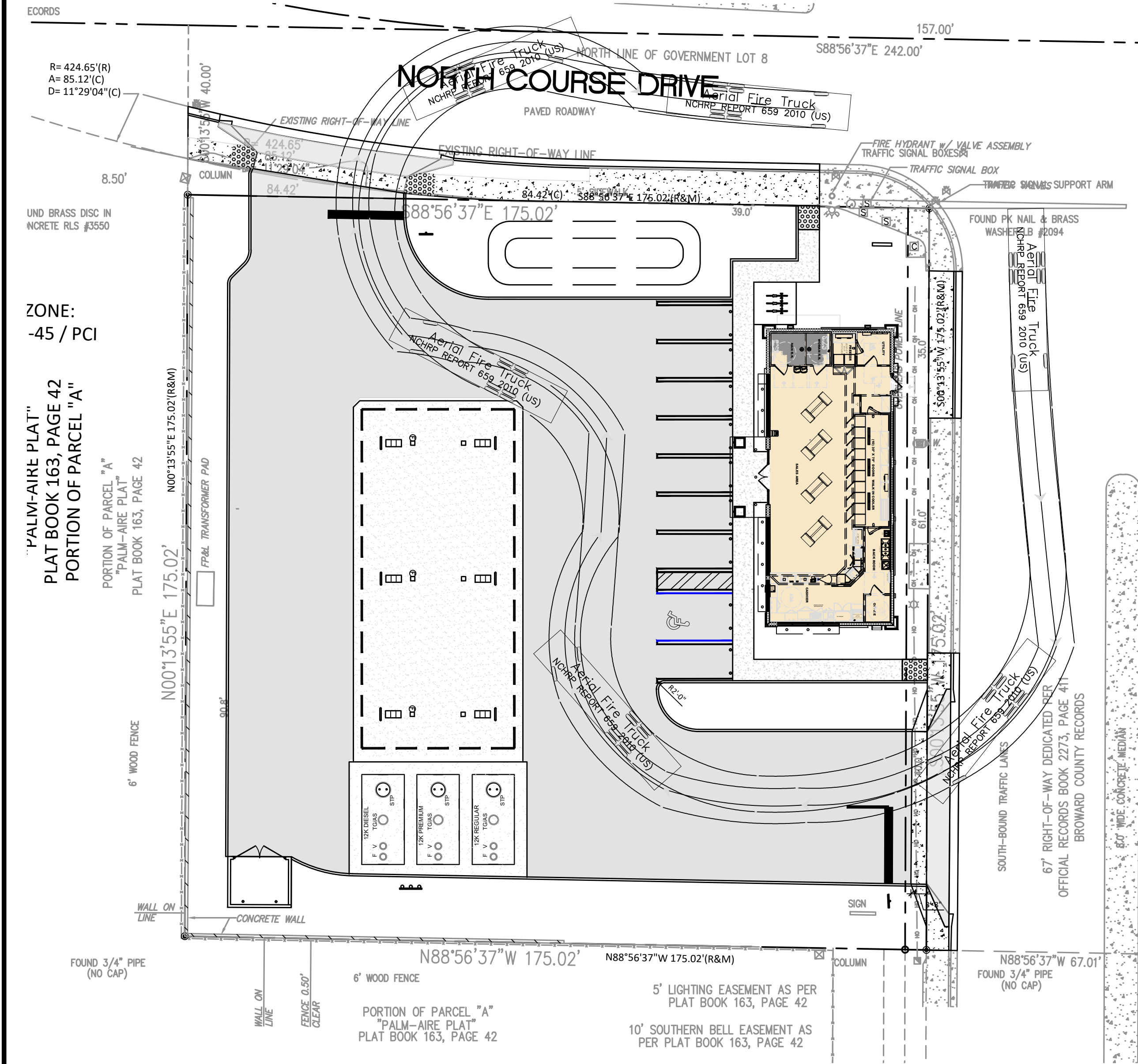


Y:\Shared\Documents\001-Engineering\Sunshine Gasoline Distributors\21119 - S&S 4010 Chev 301 Pompano Rev re signed Nov 202402 - DWG File\001 - CADD\02 21119 CD.dwg, 9/14/2025 8:44 AM



Copyright © MDM SERVICES, INC.

All rights reserved. No part of this plan may be reproduced, distributed, or transmitted in any form or by any means, including photocopying, recording, electronic or mechanical methods, without the prior written permission of MDM Services, Inc. For permission requests, write MDM Services, Inc., 1055 Kathleen Road, Lakeland, FL 33809.

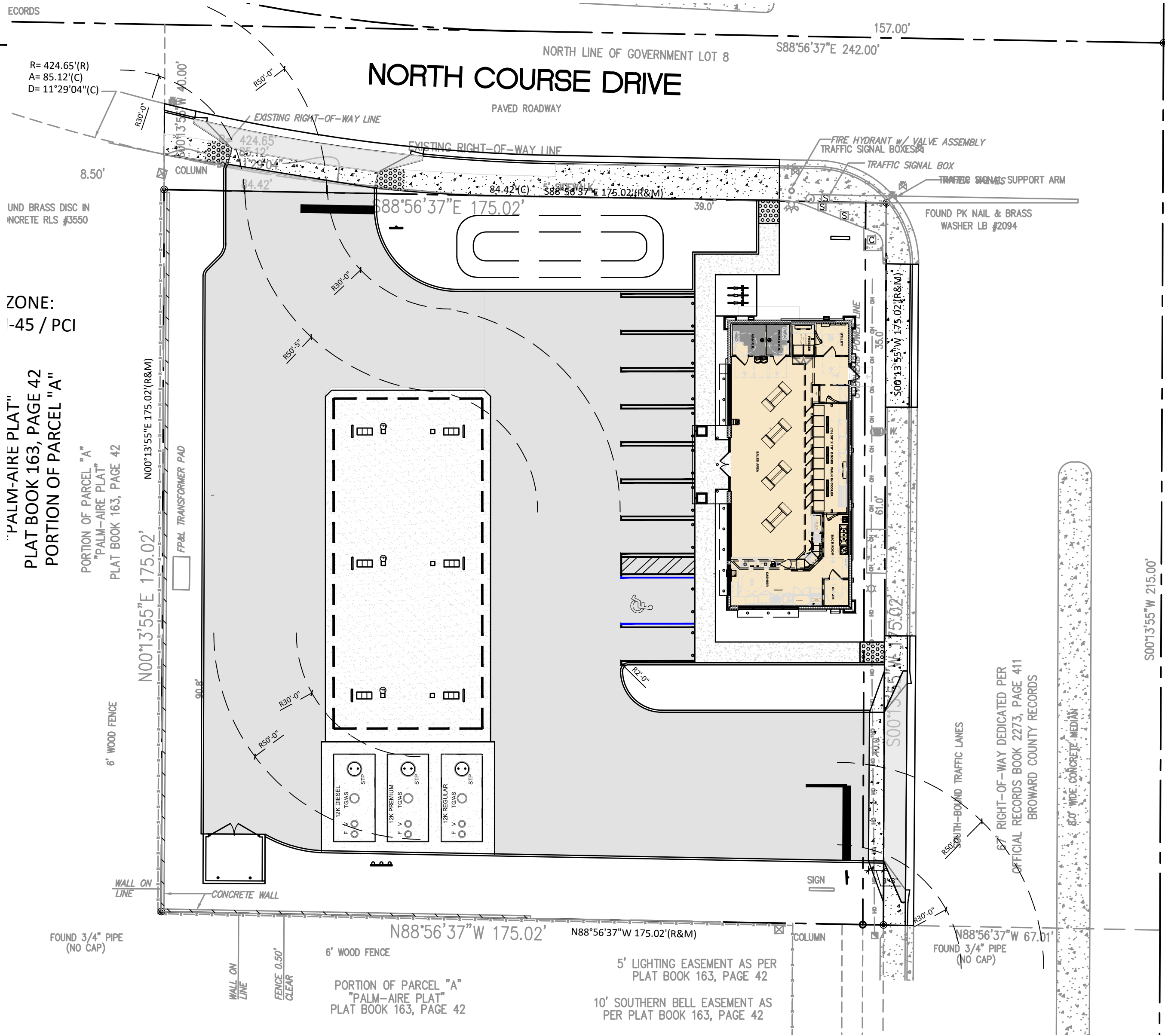


POMPANO PARKWAY - STATE ROAD #845  
(POWERLINE ROAD - S.W. 25th. AVENUE)

ZONE:  
-45 / PCI

"PALM-AIRE PLAT"  
PLAT BOOK 163, PAGE 42  
PORTION OF PARCEL "A"

"PALM-AIRE PLAT"  
PLAT BOOK 163, PAGE 42  
PORTION OF PARCEL "A"



POMPANO PARKWAY - STATE ROAD #845  
(POWERLINE ROAD - S.W. 25th. AVENUE)

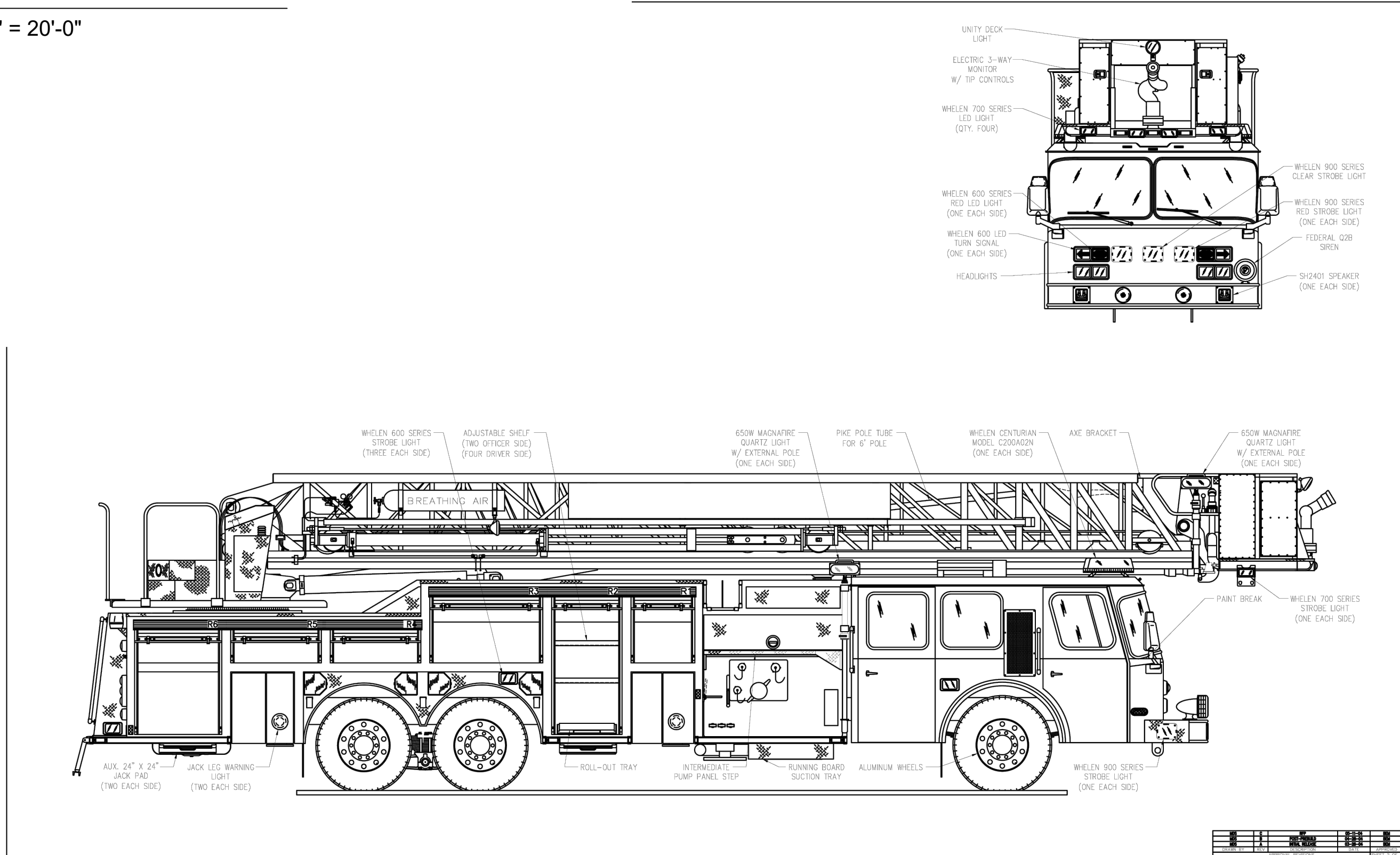
ZONE:  
-45 / PCI

"PALM-AIRE PLAT"  
PLAT BOOK 163, PAGE 42  
PORTION OF PARCEL "A"

"PALM-AIRE PLAT"  
PLAT BOOK 163, PAGE 42  
PORTION OF PARCEL "A"

## FIRE TRUCK PLAN

SCALE: 1" = 20'-0"



### NOTES:

- VERTICAL CLEARANCE.  
FIRE DEPARTMENT ACCESS ROADS SHALL HAVE AN UNOBSTRUCTED VERTICAL CLEARANCE OF NOT LESS THAN 13FT. 6IN. NFPA1-18.2.3.4.1.2 (PERMANENT, WEATHERPROOF SIGNAGE) ON TRUCK ACCESS ROUTES.
- TWO-WAY RADIO COMMUNICATION ENHANCEMENT SYSTEMS.  
IN ALL NEW AND EXISTING BUILDINGS, MINIMUM RADIO SIGNAL STRENGTH FOR FIRE DEPARTMENT COMMUNICATIONS SHALL BE MAINTAINED AT A LEVEL DETERMINED BY THE AHI. NFPA 1-11.10, 2012 EDITION.
- FIRE HYDRANTS  
IN EVERY CASE, AT LEAST TWO FIRE HYDRANTS SHALL BE WITHIN 400 FEET OF THE ENTRANCE OF ANY BUILDING AND BE SPACED 500 FEET APART THROUGHOUT. MEASUREMENTS TAKEN AS THE FIRE TRUCK TRAVELS. COPP CO 93.25 (C)(G)
- THESE PLAN COMPLY WITH ALL REQUIREMENTS OF THE FLORIDA FIRE PREVENTION CODE, LATEST EDITION AND BROWARD COUNTY AMENDMENTS TO THE FLORIDA FIRE PREVENTION CODE, N.F.P.A. 101 (LIFE SAFETY CODE), LATEST EDITION, AND N.F.P.A. 1 (UNIFORM FIRE CODE), LATEST EDITION.
- FIRE LANE MARKINGS  
ESTABLISHED FIRE LANES/ZONES SHALL BE CLEARLY MARKED BY BRIGHT YELLOW PAINT WHICH SHALL OUTLINE THE BORDER OF THE FIRE ZONE BY AN APPROXIMATE 6-INCH PAINTED BORDER THAT IS 36-INCHES FROM TOP TO BOTTOM, 24-IN. (61-CM) HIGH LETTERS CENTERED IN YELLOW "FIRE LANE NO PARKING" PAINTED ON PAVEMENT, WHICH WORDS SHALL BE SURROUNDED ON ALL SIDES BY DIAGONAL YELLOW-PAINTED STRIPING WITH APPROXIMATELY 30 INCHES BETWEEN EACH DIAGONAL STRIPE, WHICH STRIPING SHALL ENCOMPASS THE BALANCE OF THE INTERIOR OF THE FIRE ZONE. THE FIRE CHIEF OR HIS DESIGNEE MAY FOR JUST-CAUSE WAIVE, OR UTILIZE AN ALTERNATIVE METHOD FOR THE LAST-STATED REQUIREMENT; HOWEVER, SUCH WAIVER OR ALTERNATIVE METHOD USE OF REQUIREMENTS SHALL BE IN WRITING AND SHALL STATE THE BASIS OF SUCH WAIVER, MODIFICATION OF REQUIREMENTS.
- REFLECTIVE MARKERS  
PROVIDE ONE (1) BLUE DOUBLE-REFLECTIVE DEPARTMENT OF TRANSPORTATION TYPE ROAD MARKER (ROADWAY PAVEMENT MARKER (RPM)) TO BE ADHERED TO THE HARD SURFACES OF THE ROADWAY IN THE MIDDLE OF THE LANE NEAREST TO, AND DIRECTLY IN FRONT OF THE EXITING AND NEWLY INSTALLED FIRE DEPARTMENT CONNECTIONS (FDC).

CLIENT:



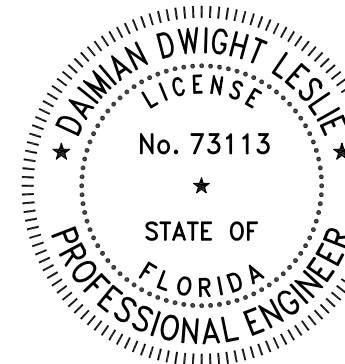
DESIGN TEAM TITLE:

**MDM**  
SERVICES, INC.

engineering • environmental • construction

2151 W. HILLSBORO BLVD, DEERFIELD BEACH,  
FLORIDA 33442  
Phone: (954) 427-3076  
FLORIDA CA #4857

NO. DATE REVISION DESCRIPTION



DAIMAN D. LESLIE  
FL REG # 73113

PROJECT DESCRIPTION:

**NEW  
C-STORE**

SITE DESIGNATION:

**SUNSHINE GASOLINE DISTRIBUTORS  
CHEVRON  
GAS STATION #010**

SITE ADDRESS:

**301 POMPANO PKWY,  
POMPANO BEACH, FL  
33069**

SCALE: AS NOTED MDM JOB # 21119

DATE: 08-11-2022

DESIGNED BY:

DRAWN BY:

CHECKED BY:

FILE NAME:

21119 CD.DWG

DRAWING TITLE:

**FIRE TRUCK PATH**

SHEET NO:

**DRG-2.5**

PZ25-12000017

07/02/2025